

H&F 2030

CLIMATE AND ECOLOGY STRATEGY

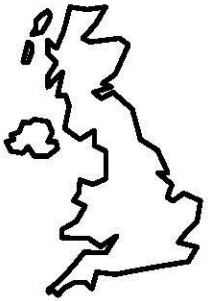


What is the climate emergency in H&F?



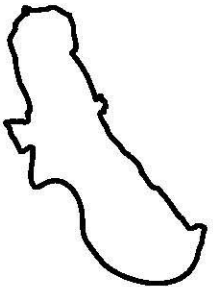
Globally

- Sea levels have risen by 0.2m, with up to 1m projected by 2100¹
- Frequent and catastrophic disasters are already occurring as a result of human-caused emissions²



Nationally

- Heat-related deaths to increase 500% by 2080³
- 40,000 air pollution-related deaths in the UK per year⁴
- Cold homes cost the NHS £1.4bn per year⁴



In Hammersmith & Fulham

- H&F is vulnerable to high heat, with little green space⁵
- Most of the borough lies within flood risk zones⁵



H&F's 2030 vision

H&F's climate and ecology strategy sets out the route to net zero greenhouse gas emissions by 2030 for the borough.

Its goal is a clean and sustainable future in which human activity works to the benefit of all people and the environment.

It seeks a safe climate for future generations, along with rich ecosystems that support people and nature, a thriving green economy, and the best possible health, wellbeing and quality of life for all our residents.

The transition from fossil fuels will be an empowering and collective effort in which all have a voice, and the challenges and opportunities from change will be shared justly.



Wider benefits of action

- Air quality, including through cycling, walking, electric vehicles, and removal of gas boilers
- Health and wellbeing, including through warm homes, cycling, access to green space, and sustainable diets
- Poverty and equality, through energy efficient, fuel poverty-proof homes, reskilling for green sectors, and access to clean air and green space
- Green growth and local jobs, including supporting White City biotech and local skills for green jobs
- Biodiversity, by increasing and improving green space

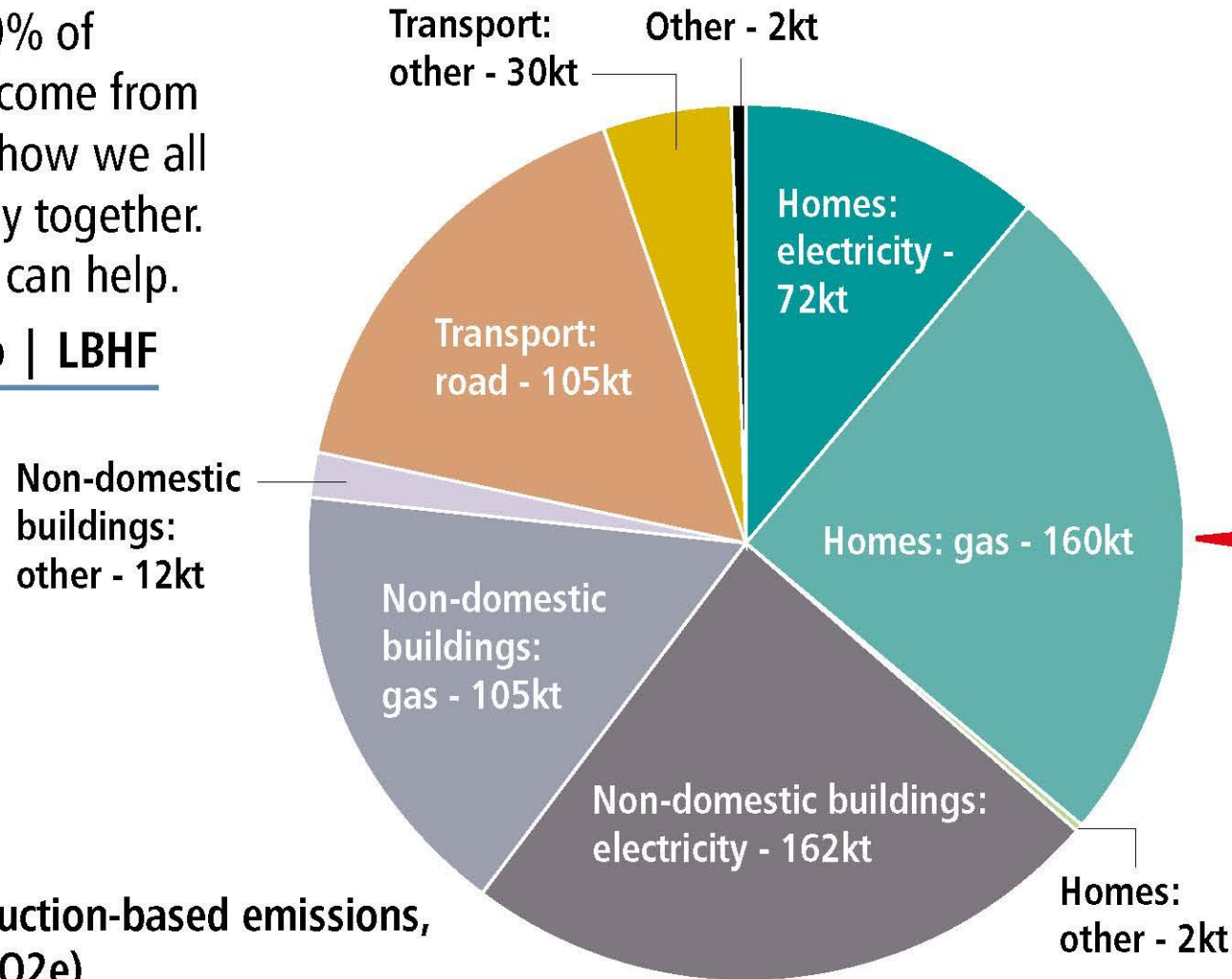


Our current emissions

Did you know? 90% of emissions in H&F come from our community – how we all live, work and play together. Find out how you can help.

What you can do | LBHF

H&F borough production-based emissions, 2018 (kilotonnes CO₂e)

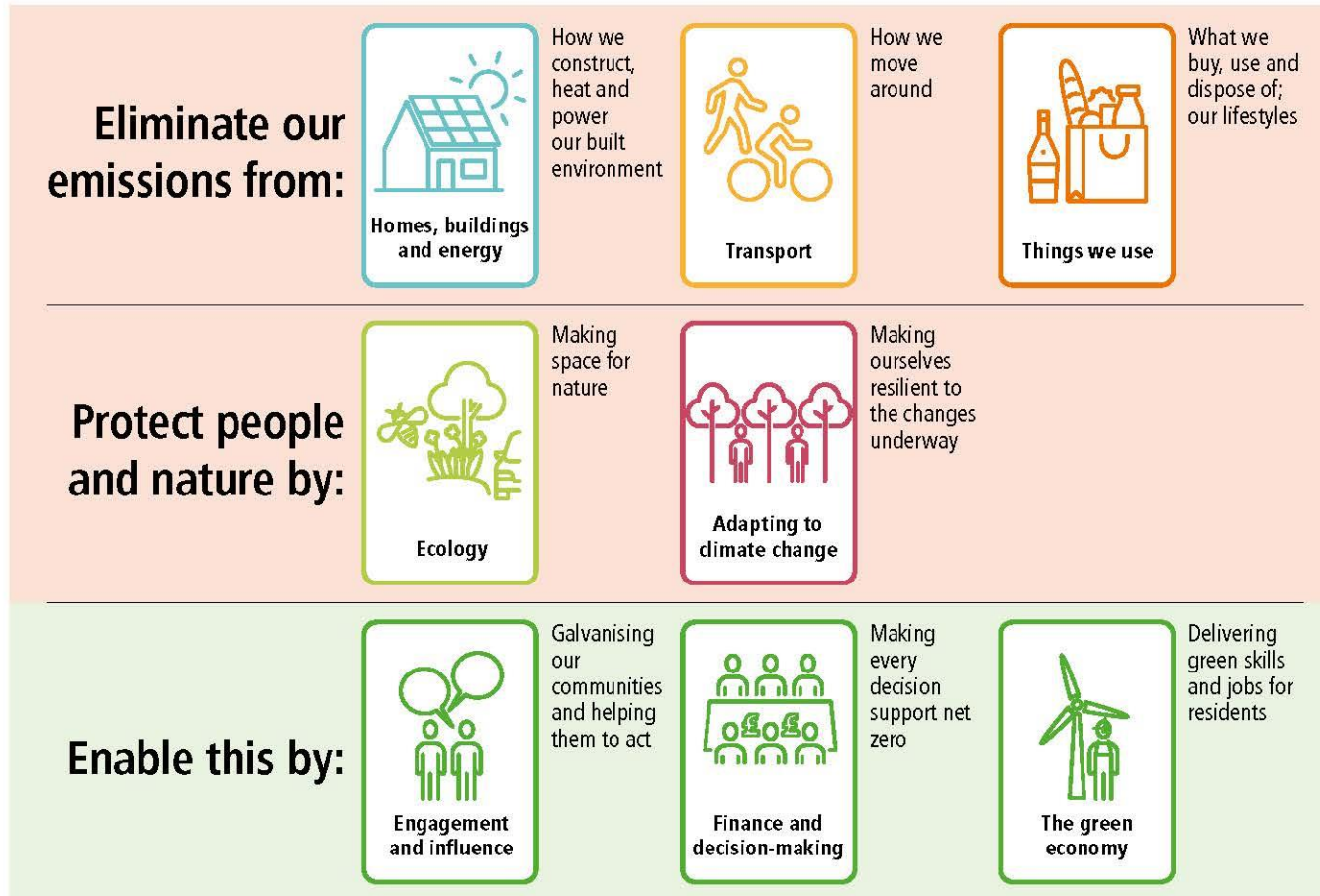


Did you know?
If we included emissions from all the things we eat, buy and use, our total emissions are 2.5x higher



Strategy on a page

What do we need to do?



Purpose of the strategy

The council will develop its work with local communities and partnerships in delivering net zero, and will reflect the actions and pledges taken by others in future updates to the strategy.

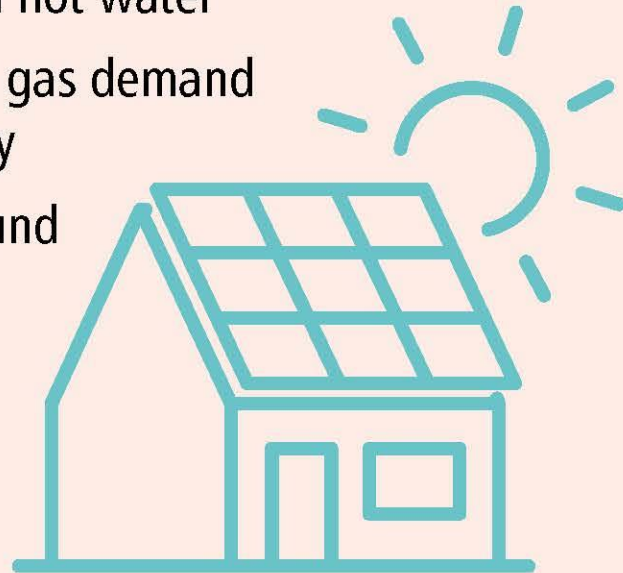
How we'll report progress

We'll report on our emissions year on year. Our Climate Strategy will be an evolving document, with annual updates to report on progress against the actions.



Challenge 1. Homes, buildings and energy

- H&F's homes account for 36% of the borough's direct emissions
- The borough's non-domestic buildings account for 43% of the borough's emissions
- The majority of emissions from homes are from gas used for heating and hot water
- Poor insulation results in high gas demand and contributes to fuel poverty
- Cold homes cost the NHS around £1.4bn per year

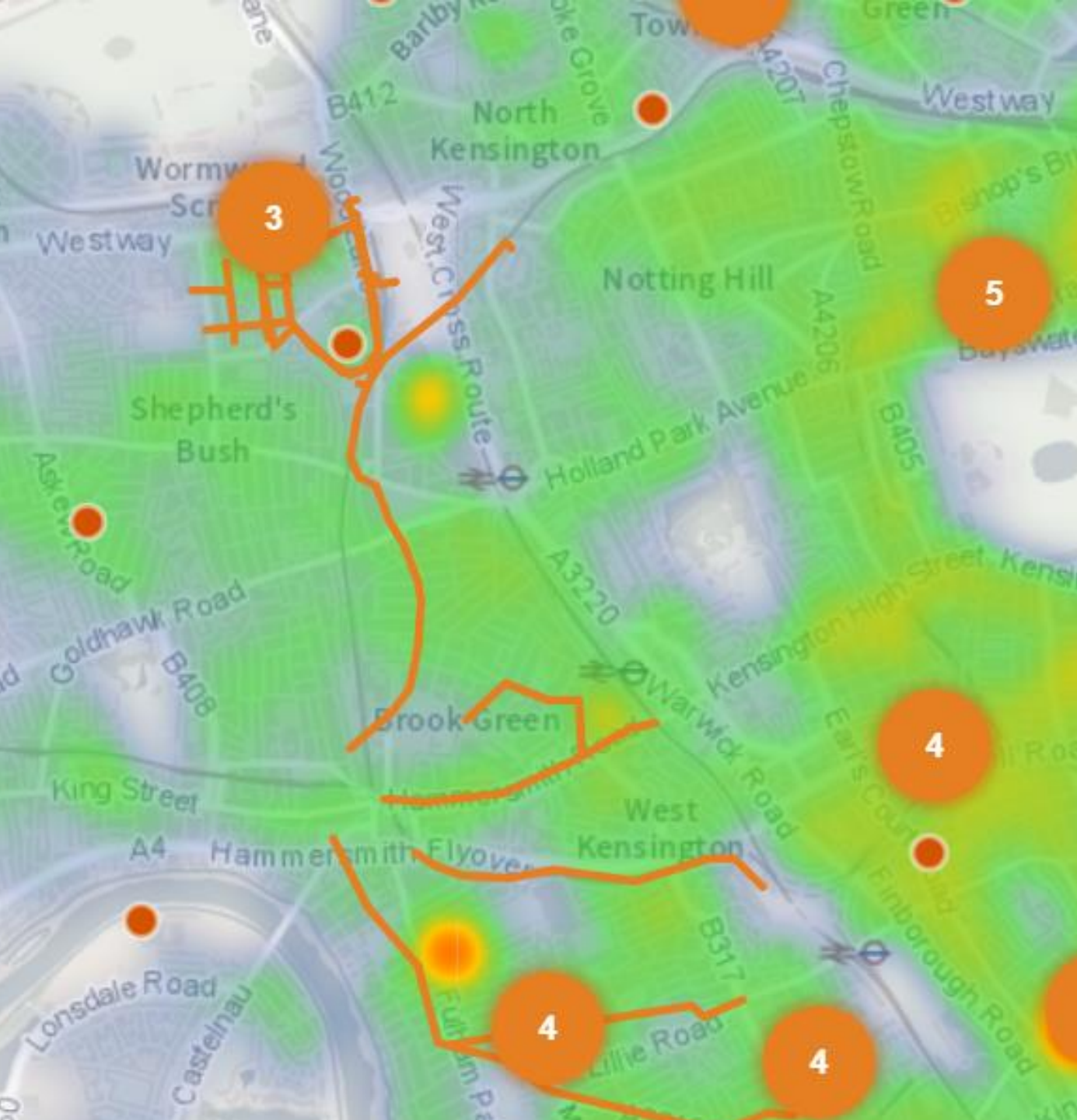


2030 vision for homes, buildings and energy

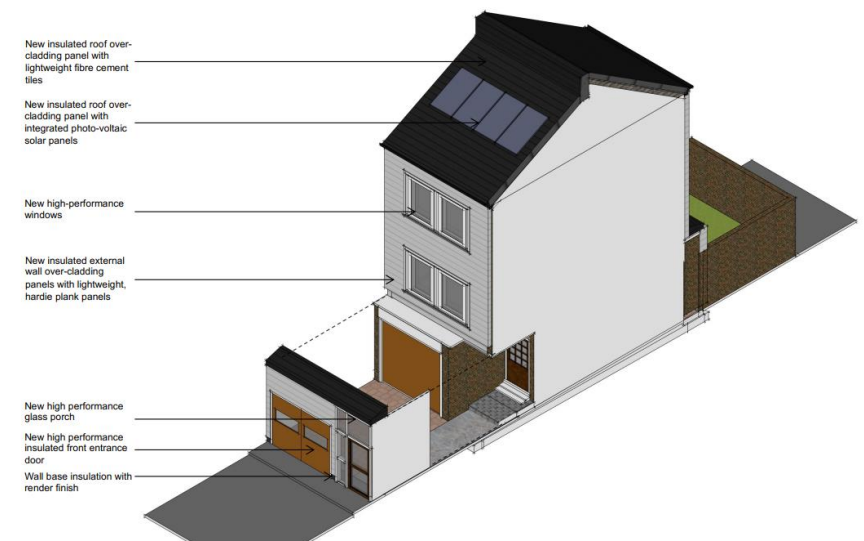
All residents in the borough live in comfortable, affordably heated and well-adapted homes that are cost efficient and have zero carbon impact.

- All business and organisational buildings are powered sustainably, cost efficient and have zero carbon impact
- Our heat and power is supplied by renewable energy and, where possible, efficient local sources





6. Hammersmith & Fulham – Enclosed porch / entrance



Challenge 2. Travel

- **Road transport is responsible for 16% of the borough's emissions**
- personal travel accounts for 72%, predominantly made up of car usage
- Freight accounts for 28% of fuel use
- As well as greenhouse gas emissions, transport creates air and noise pollution, with significant implications for biodiversity and public health



2030 vision for travel

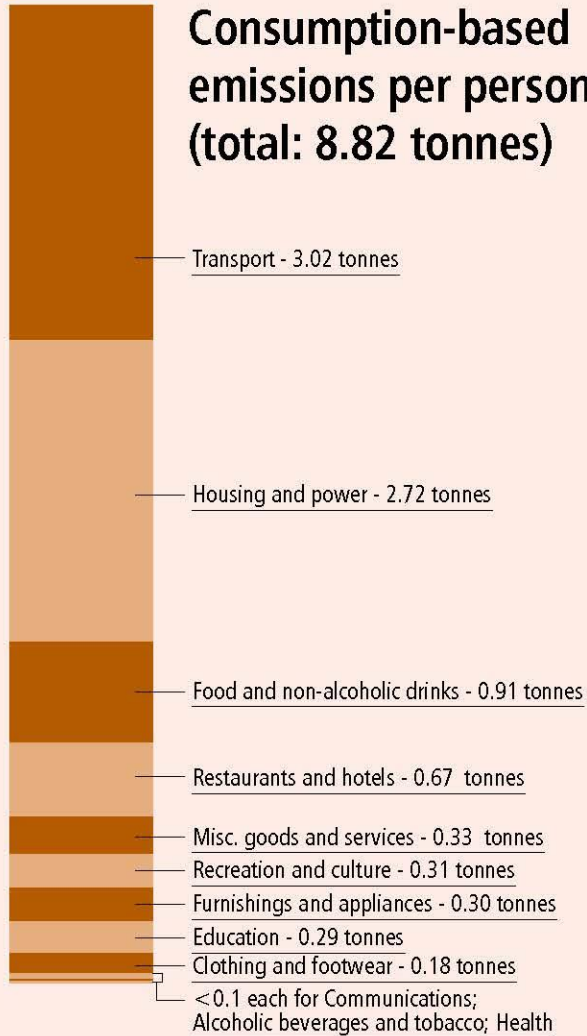
- Residents and visitors to the borough take pleasure in travelling by foot, bike and public transport along safe, healthy and green streets
- The vehicles on our roads will be fewer and zero-carbon
- Residents are able to travel sustainably, and improve their wellbeing with more walking and cycling





Challenge 3. Things we use

Consumption-based emissions per person in H&F (total: 8.82 tonnes)



- A third of the average person's carbon emissions come from the things we buy and use, including food
- The largest source of carbon emissions is from food, in particular meat and dairy
- Recycling alone isn't enough, we need to reduce the amount of things we use and throw away



2030 vision for things we use

- We value all the things we use and understand their impact on the climate
- People are enabled and motivated to make sustainable choices so that little is thrown away, and goods and materials have a second life through reuse, repair and recycling





Challenge 4. Ecology

- **H&F is heavily urbanised**, so we need to be creative about how we make space for nature
- H&F is 28% vegetated with 12% tree canopy cover compared to London-wide averages of 43% and 21%.



2030 vision for ecology

- Green space is expanded, enriched, and nurtured by all, providing a haven for nature and a beautiful public realm
- It is properly valued for the benefits it brings, including to biodiversity, clean air, wellbeing, food, and a safe climate, among others





Tree species found in H&F

Data from Confirm extract, 25/02



NOTE: 1 tree = 1%



Challenge 5. Adapting to a changing climate

- Summer daytime temperatures in London are expected to be 2.1-4.8°C hotter by mid-century⁸
- **H&F is vulnerable to flooding with much of its area less than five metres above sea level**
- **H&F is particularly vulnerable to 'urban heat island' effects**, in which urban areas can be up to 10°C warmer than surrounding areas
- London is also at risk of water shortages due to climate change



2030 vision for adapting to a changing climate

- Our people and places are prepared for the impacts of climate change
- The borough's buildings, spaces and infrastructure are well adapted, and its residents and communities are resilient
- The health and wellbeing of our residents is protected against climate impacts and risks





Three enablers for the Climate and Ecology Strategy

1. Engagement, education and influence
2. Finance and decision-making
3. Green economy



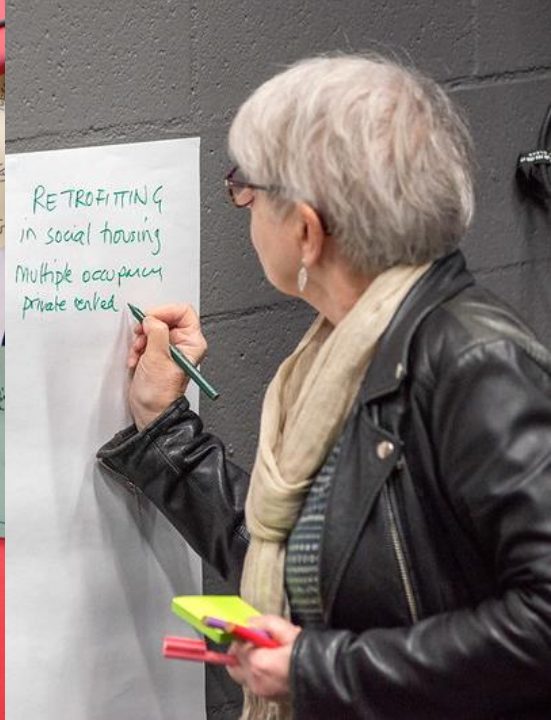
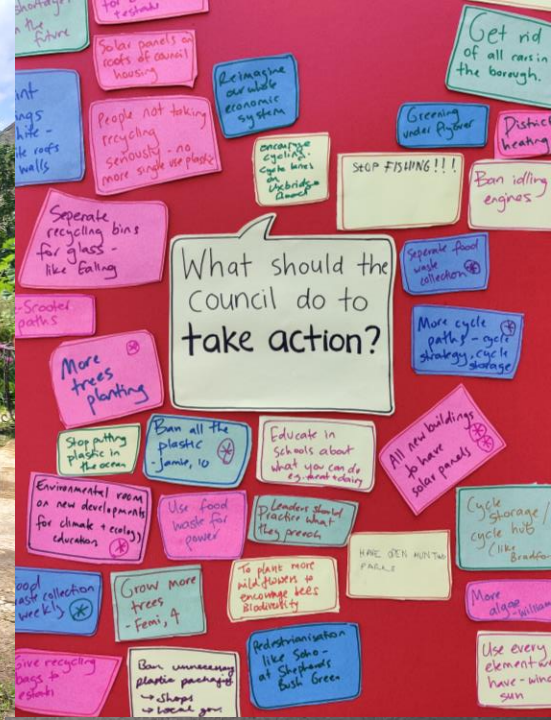
1.

Engagement, education and influence

The council will follow six principles for its engagement:

- Work in the open
- Amplify community action
- Champion under-represented voices
- Build collective knowledge
- Create the conditions for change
- Partner and collaborate





2.

Finance and decision-making

- Align our financial and capital planning with the net zero target
- Ensure the council's investments are aligned with its commitment to net zero
- Support net zero through council decision-making, business planning and procurement
- Attract funding, investment and commercial partnerships
- Explore investment in local renewable energy generation, supply and resilience
- Provide regular opportunities for residents to monitor our progress





Responsible Investment Statement

Hammersmith & Fulham Pension Fund • 2020



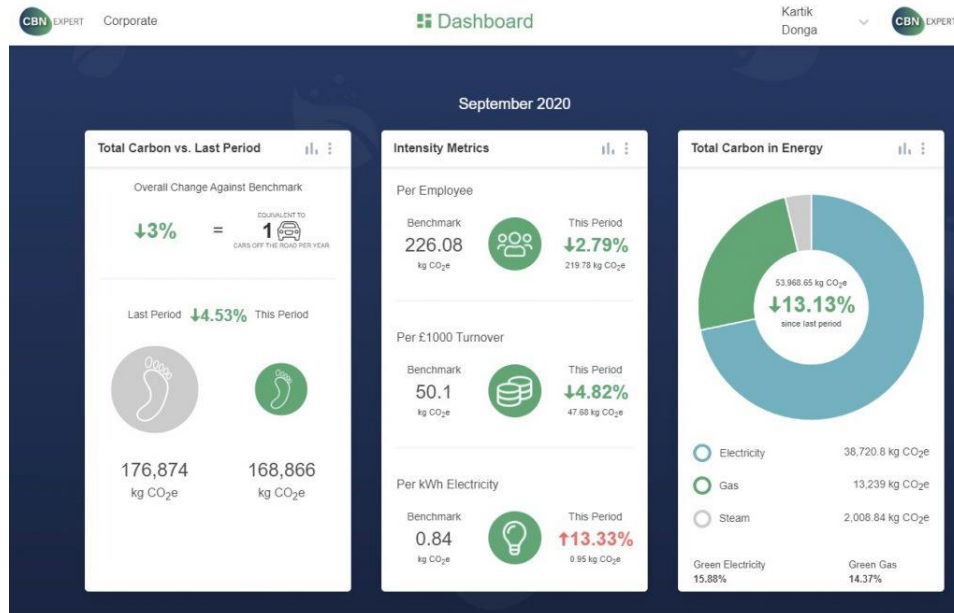
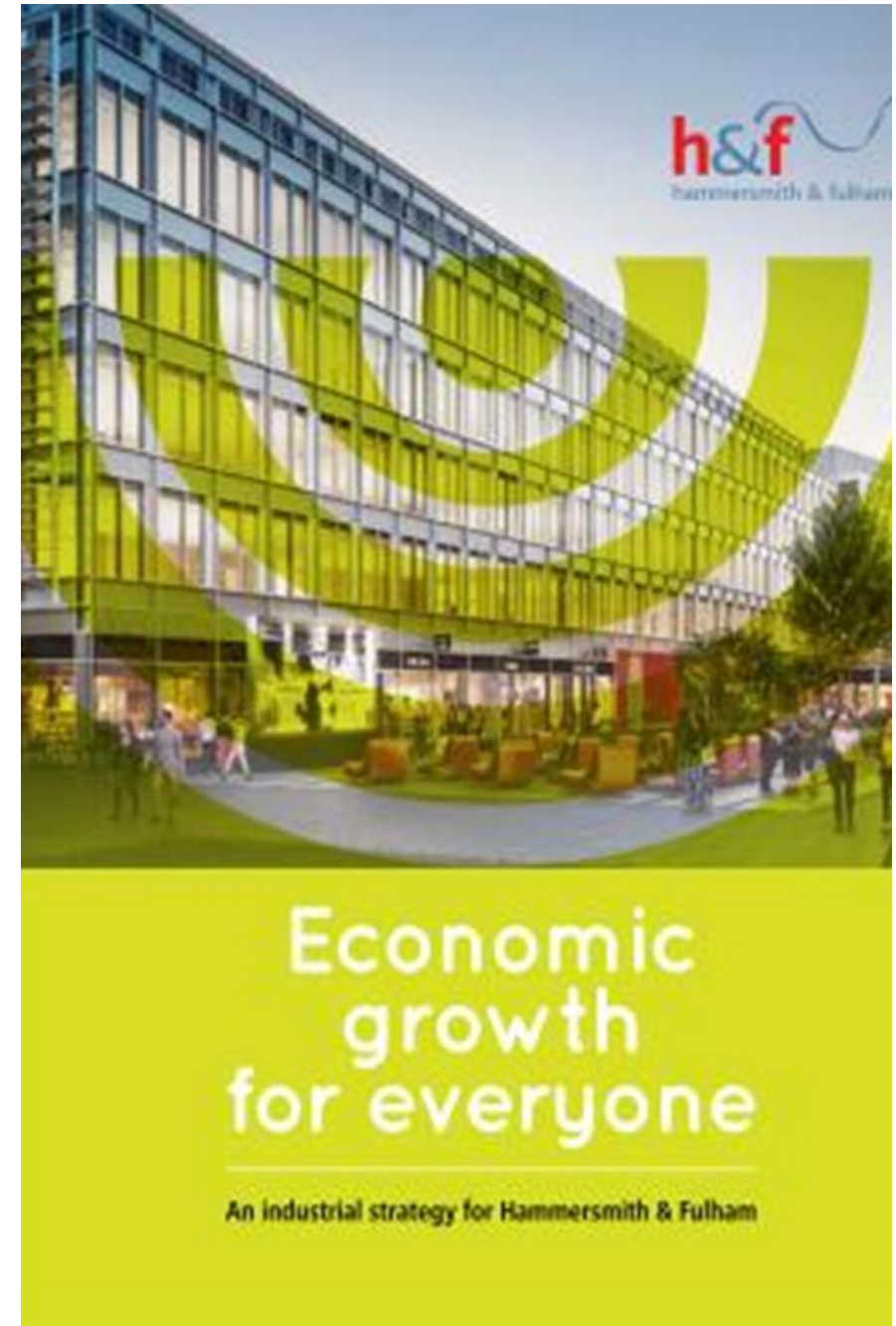
3.

Green economy

The workstream will aim to:

- Integrate our industrial strategy and climate programme to bring green economy jobs and skills to residents
- Support existing low-carbon pioneers, and build H&F as a leader in the green economy
- Support a green recovery from COVID-19.
- Influence and support our local businesses and partners to reach net zero by 2030





Priorities for 2022-23

Initial top priorities in actioning this administration's ambitious net-zero carbon plan:

1. Council housing retrofit plan
2. Corporate buildings retrofit
3. Support private homes retrofit
4. Energy masterplan
5. Clean Air Neighbourhoods
6. Ecology and adaptation



Council housing retrofit plan

Current status	<ul style="list-style-type: none">• Pilot schemes including Energiesprong and 5 hybrid heat pumps.• Funding won for retrofit - further applications to be made.
In progress	<ul style="list-style-type: none">• Retrofit assessments now undertaken for all capital programme projects.• Retrofit plan in development to model cost, schedule, and policy approaches to retrofitting the entire housing stock.
Ambition	<ul style="list-style-type: none">• Detailed modelling of each property• Proposed measures and costs• Strategy for resident involvement, financing, planning requirements etc.



Corporate buildings retrofit

Current status	<ul style="list-style-type: none">• Civic campus ground source heat pump• 4 air source heat pump (ASHP) schemes underway
In progress	Retrofit Accelerator for Workplaces (RAW) – 39 properties being surveyed to apply for Public Sector Decarbonisation Scheme (PSDS) funding.
Ambition	<ul style="list-style-type: none">• A plan to decarbonise core properties, covering 1,920 tons CO2e p/a – 57% of our 'scope 1 + 2' footprint• A pipeline of shovel-ready projects for external funding



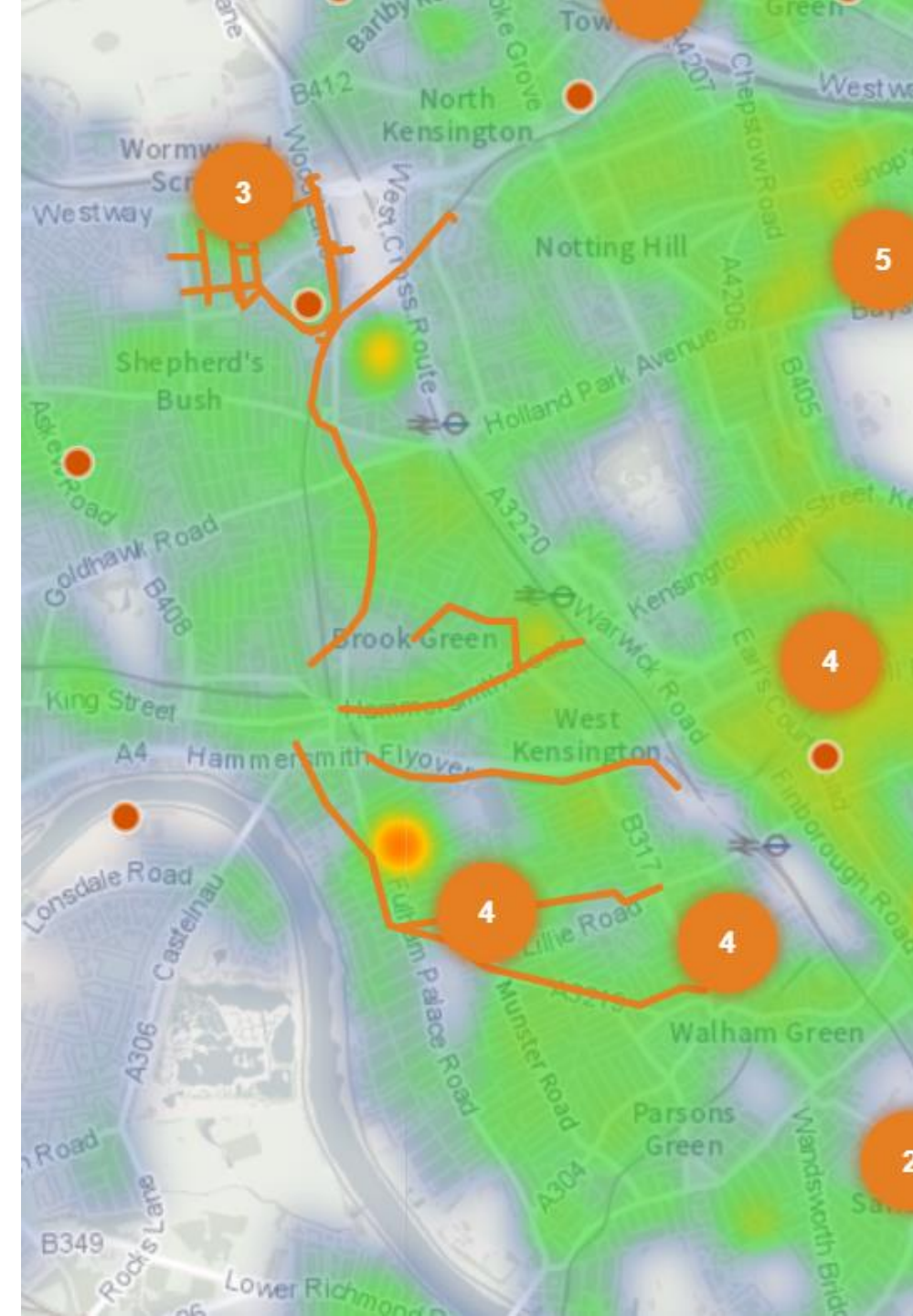
Support private homes retrofit

Current status	<ul style="list-style-type: none">• Developing guidance to retrofit homes• Free pre-planning application advice• Free comprehensive retrofit plans
In progress	<ul style="list-style-type: none">• Funding retrofit for low income households with Green Homes Grant• Offering support with Solar Together• Engaging people on the benefits of retrofitting their homes
Ambition	<ul style="list-style-type: none">• Creating a retrofit market within the region to support skills and jobs• Scaling up retrofits across the borough• Supporting the transition to clean energy and heat networks



Energy masterplan

Current status	Civic campus GSHP in process to provide district heating to the site.
In progress	Joint funding won to develop an energy masterplan, with work underway since early 2022.
Ambition	<ul style="list-style-type: none">• Identify the strategic opportunities for district heating in the borough• Provide a pipeline of major energy projects for funding bids• Inform the Local Plan and area masterplans for future development.



Clean Air Neighbourhoods

Current status	South Fulham scheme, East of Wandsworth Bridge Road, implemented.
In progress	Scoping future neighbourhoods for Clean Air Neighbourhood roll-out.
Ambition	<ul style="list-style-type: none">• Coproduce a rollout of neighbourhood schemes with residents• Substantial improvement in air quality, including around schools• Reducing road transport emissions by managing out-of-borough through-traffic.



Ecology and adaptation

Current status	Ecology and adaptation strategies and actions plans developed for the council and other stakeholders to consider.
In progress	Ecology and adaptation action plans being implemented across the borough.
Ambition	Support residents and businesses to take action on ecological issues and more focus on adapting to higher temperatures and the impacts on public health, homes, buildings and infrastructure.

